

DELL EMC POWERVAULT ME4 SERIES

PURPOSE-BUILT AND OPTIMIZED FOR SAN/DAS STORAGE



ESSENTIALS

Value

- **Simple:** Quick to install, simple-to-use & easy to order with all-inclusive software.
- **Fast:** Run workloads with more processor power, IOPs, bandwidth, and backend connectivity.
- **Flexible:** Easily consolidate and run block workloads on modular all-flash or hybrid flash configurations.
- **Affordable:** With minimum configurations starting under \$11K you can start small and scale with the business.

Benefits to you

- **Deployment:** Optimized for DAS with Dell PowerEdge Servers or as shared SAN storage.
- **Multiple Uses:** Apply ME4 to Surveillance, HPC, VMware, Exchange, and much more.
- **All-inclusive:** Each array comes with all the software you'll need to store, manage, and protect your data.
- **Performance:** Get consistent high performance and throughput for your virtualized workloads.
- **Flexible:** Configure with multi-protocols for all flash or hybrid
- **Future-Proof:** Protect your investment with no hidden costs and guaranteed satisfaction.

OEM Value

- From bezel to BIOS to packaging, your ME4 storage arrays can look and feel as if they were designed and built by you. For more information, visit Dell.com/OEM

FUTURE-PROOF
LOYALTY PROGRAM

Simple.
Fast.
Affordable.

Dell EMC PowerVault arrays, already the preferred choice for thousands of small scale and price-conscious businesses, now gain broader appeal with the new PowerVault ME4 Series. The PowerVault ME4 Series is a next gen entry-level block storage array that's purpose-built and optimized for price-sensitive SAN & DAS environments with the simplicity, performance and affordability you'd expect from Dell EMC.

The Dell EMC PowerVault ME4 Series brings the essential features of high-end storage to small-medium businesses — simply and affordably. These flash-based systems drive application performance higher for a wide range of businesses and budgets. With its flexible connectivity options, the PowerVault ME4 arrays offer significant advantages for SAN/DAS workloads with outstanding IOPs, massive bandwidth, scale and low latency. An all-inclusive software model helps to reduce OPEX and improve operational efficiencies — making the ME4 Series hard to beat. If you're looking for raw power and absolute simplicity in a small footprint; if you're cost-conscious and need storage availability and reliability, then Dell EMC PowerVault ME4 Series — starting in either 2U or 5U — is for you. Designed to deliver the performance of flash with the best economics of disk, the PowerVault ME4 systems are the perfect fit for small-scale storage consolidation, application acceleration, and business continuity.

MODULAR, EFFICIENT

With its versatile, modular and intelligent data management design, PowerVault ME4 responds to the pressures and needs of IT by simplifying storage administration and operations. The PowerVault ME4 Series is intuitive to setup and manage ensuring the availability and protection you expect for your data. Besides saving you money, the simplicity of the ME4 Series helps you reclaim time and resources, giving you the opportunity to focus on innovating and IT transformation.

WORKLOAD SOLUTIONS

IT organizations purchase storage systems as part of a workload solution to either solve a business issue or seize a business opportunity. The PowerVault ME4 Series, configured either as DAS or as SAN storage deliver high-value workload solutions for many types of businesses. And since the ME4 Series is integrated with today's most widely used hypervisors and operating systems, they help you consolidate your infrastructure and drive operational efficiencies

that can result in real competitive advantages. The PowerVault ME4 Series is the ideal solution for many workload types including video surveillance, SAN and DAS Exchange, Enterprise SAN, low latency HPC, NoSQL databases, and VDI – to name a few.

SIMPLE, FLEXIBLE CONNECTIVITY

Each PowerVault ME4 array brings multi-protocol flexibility to your business with 10G iSCSI BaseT or SFP+, 12G SAS and 16G FC connectivity. Data-intensive application throughput is enhanced with four ports per controller while extending business continuity with robust remote replication features. ME4 Series supports backwards compatibility with auto-negotiation for iSCSI and FC connections. PowerVault ME4 arrays scale up to 336 drives using ME412, ME424 and ME484 expansion enclosures. Additionally, the web-based (HTML5) ME Storage Manager provides an intuitive management interface, making ME4 arrays simple to configure in 15 minutes and easy to manage. Dual-controller models connect four high-availability servers or eight non-redundant servers with 5-9's availability and balanced performance in mixed virtualized DAS environments.

EASY TO EXPAND AND CONFIGURE

Easily expand your ME4012, ME4024, and ME4084 arrays by connecting PowerVault ME412, ME424, and ME484 expansion enclosures with 12G SAS backend connectivity. The high-performance PowerVault ME4 arrays utilize 3.5" and 2.5" HDDs and 2.5" SSDs (SED drives available) that can be flexibly mixed to achieve the capacity you need. The support for these different drive types allow you to configure ME4 Series as a hybrid-flash or all-flash array for maximum performance. Additionally, PowerVault ME4's expansion enclosures deliver the speed, flexibility and reliability to satisfy performance-intensive applications that work with active or dynamic data stores. The expansion enclosures (ME484 also available as JBOD) are ideal for applications that generate large amounts of data and require extended storage capacity. This modular architecture offers easy and economical expansion up to 4PB of raw capacity.

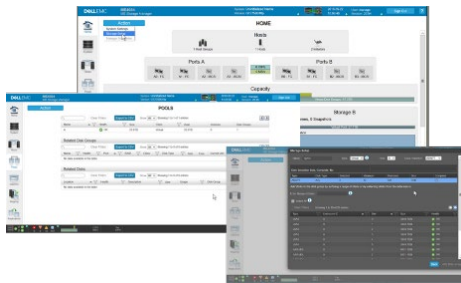
ALL-INCLUSIVE SOFTWARE + MORE

With all-inclusive enterprise-class software including replication, snapshots, 3-level tiering, VMware integrations, encryption (SED), distributed RAID, simple management tools and more - you can set it and forget it. PowerVault ME4 Series comes standard with ProSupport base support with option for premium ProSupport Plus. ProDeploy is also available with the ME4 Series to help you get up and running faster.

PowerVault ME4 Series sets the standard for entry level SAN and DAS storage simplicity, reliability and quality so you can stay focused on your business. Engineered from the ground-up to tackle your data storage challenges, these arrays come in three scalable and flash optimized models to flexibly fit your budget. Whether you are looking to start small or grow to hundreds of terabytes, Dell EMC PowerVault ME4 Series has you covered.

"Dell EMC's PowerVault ME4 Series is highly optimized for entry-level SAN and DAS virtualized workloads with affordable pricing. It combines simplicity and power with all-inclusive enterprise class software for any size business"

Craig Bernero, SVP and GM, Midrange & Entry Solutions



Integrated web management (HTML5)

What you can expect from the ME4 Series

More IOPS that accelerate applications. More bandwidth for data mining applications. Simpler management from anywhere. No matter what workload mix you're running, this low-cost array can handle it. With the new PowerVault ME4 Series, we're not just leveling the entry-level SAN/DAS storage playing field – we're tipping it in your favor!



PowerVault ME4012



PowerVault ME4024



PowerVault ME4084



Learn more about Dell EMC Unity solutions



Contact a Dell EMC Expert

DELLEMC