









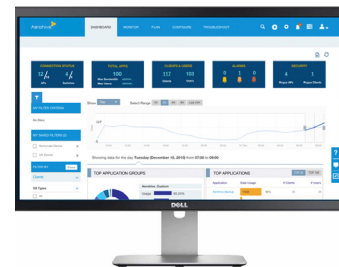
Dell EMC Networking Aerohive wireless access points feature built-in distributed control technology that provides enterprise scalability without the need for controllers, advanced BYOD and security features, and cloud-based management via HiveManager, a network management system that is available for public or private cloud deployment.

Models	Wireless access points							
								
Specifications	802.11ac 2x2:2 MIMO 867Mbps max rate	802.11ac 2x2:2 MIMO 867 Mbps max rate	802.11ac Wave 2 3x3:3 MIMO 1.3Gbps max rate	802.11ac 3x3:3 MIMO 1.3Gbps max rate	802.11ac Wave 2 3x3:3 MU-MIMO Software selectable radios 2.6Gbps max rate	802.11ac Wave 2 3x3:3 MU-MIMO 1.3Gbps max rate	802.11ac Wave 2 4x4:4 MU-MIMO Software selectable radios 3.64Gbps max rate	802.11ac 2x2:2 MIMO 867Mbps max rate
Security	Trusted Platform Module (TPM) Chip for hardware-based key storage and encryption							
Network interface(s)	1x GbE	1x GbE	4x GbE	2x GbE w/link aggregation	2x GbE w/link aggregation	2x GbE w/link aggregation	2x GbE w/link aggregation	1x GbE
PoE interface	802.3af	802.3af	802.3af and/or 802.3at	802.3af and/or 802.3at	802.3af and/or 802.3at	802.3af and/or 802.3at	802.3af and/or 802.3at	802.3at
Other interface	USB and BLE	N/A	BLE and ZigBee	USB	Integrated BLE and USB	Integrated BLE and USB	Integrated BLE and USB	N/A
Operating temp	0° to 40° C	0° to 40° C	0° to 40° C	0° to 40° C	0° to 40° C	0° to 50° C	0° to 40° C	-40° to 55° C
Environment	Indoor	Indoor, plenum rated	Indoor, Wallplate	Indoor, plenum rated	Indoor, plenum rated	Indoor, plenum rated	Indoor, plenum rated	Outdoor, waterproof (IP 67)

### HiveManager Cloud-Based Network Management

HiveManager is a powerful cloud-based network management solution for Dell EMC Networking switches and access points. This next-generation management system allows administrators to plan, configure and deploy their network within minutes and maintain control through an informative, user focused GUI. Key benefits include:

- Public or private cloud deployment options
- Flexible, cloud-based management
- Simplified deployment workflows
- Streamlined device and network configuration
- Centralized policy management
- Help desk-style troubleshooting interface



### Dell EMC Support

HiveManager includes 1, 3 or 5 years of ProSupport for Multivendor Software, providing access to Dell EMC's global team of certified engineers who serve as primary support provider for troubleshooting your environment. We deliver a consistent level of software support services for server, storage and networking hardware to minimize disruptions, while helping you maintain a high level of availability and operational excellence.

[Learn more and register for a free trial of HiveManager at Dell.com/HiveManager](http://Dell.com/HiveManager)