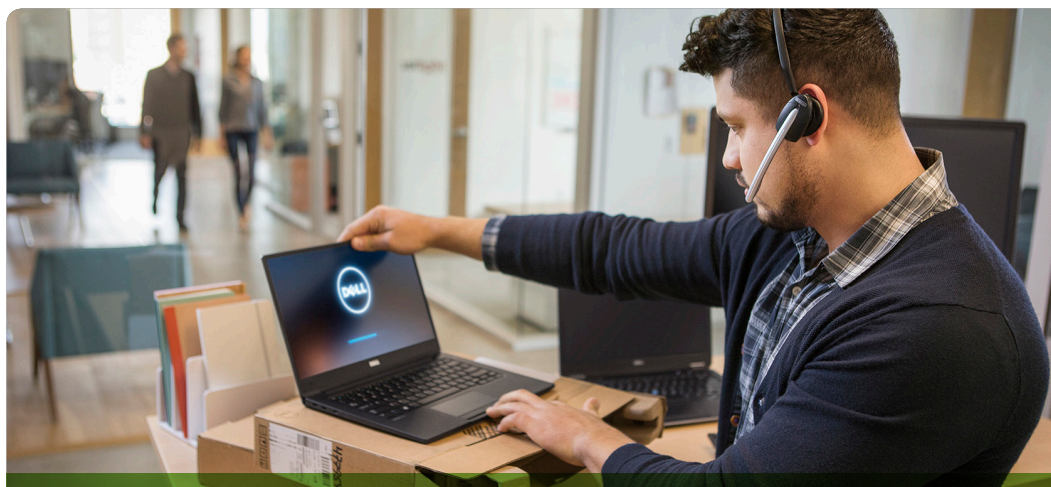




Receive systems ready for installation, out of the box.



Your new systems arrive imaged, tagged, and with the BIOS configured, so that they are ready for you to install.

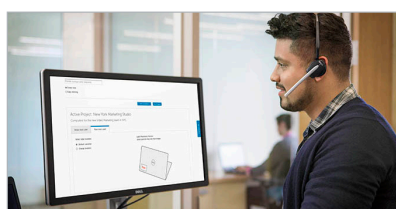
Dell Basic Deployment for Client Systems

Basic Deployment saves you time and resources by having systems arrive imaged and configured. All that is left for you to do is install them and migrate your employees' data and settings. From day one, you will be assigned an engagement manager who coordinates Dell resources to act upon your direction as you provide it.

TechDirect puts full control in your hands and real-time status updates at your fingertips.

You can direct every aspect of your deployment project via the TechDirect portal. Define the scope of your project, make changes, select asset tags and configure your systems. Then save your project as a template for use on future orders. You can even check project status whenever you want from wherever you are.

In addition, we make identifying, tracking securing and recovering your computers easier and more affordable. Asset tags and box labels can be applied to your PCs prior to shipping so you can track your systems from our factory to your employees' desk without ever opening the box. Our Asset Reporting Service enables you to easily integrate new assets into your existing asset management systems. We will email your asset report daily and you can download it from TechDirect. Finally, prior to shipping, we can configure your BIOS settings.



If you choose one of the imaging add-ons, you will find these services save an incredible amount of time. From our global configuration centers, we can image thousands of systems simultaneously.

At a glance:

Basic Deployment accelerates PC deployment by completing configuration tasks prior to shipping which eliminates the time you would spend performing those tasks onsite.

- Asset Tagging and Reporting
- BIOS settings
- Add-on imaging: WIM, Ghost, ISO or ImageAssist
- Add-on Load a generic image
- Add-on Provisioning for VMware® Workspace ONE™



Provisioning for VMware Workspace ONE yields a low-touch deployment and instant productivity.

For more information about **Basic Deployment**, please contact your sales representative.