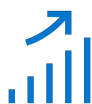




# Wyse Management Suite

Industry's first hybrid cloud management solution for Dell cloud clients with floating license allocation between private & public clouds<sup>1</sup>

**Power your Workday**

Manage up to one million endpoints<sup>5</sup> from the public and/or private cloud. Manage from any browser for real-time endpoint modern management.

**Deploy With Ease**

From zero to productivity instantly with Wyse Management Suite Pro on public cloud.<sup>2</sup> Automated processes and intelligent insights with powerful dynamic device-grouping and rules-based automation to deliver a proactive management approach.

**Security Built-In**

Highly secure, Wyse Management Suite uses HTTPs-based communications, two factor authentication and roles-based provisioning.

**Efficient Productivity**

One tool that does it all: Easily manage your Dell endpoints, configure system and BIOS configurations, complete hardware inventories and view event and audit logs for a centralized management experience.

Accelerate your cloud strategy with Dell cloud clients and software designed to enhance your virtual workspaces with ultimate security and intelligent unified management. Learn More at [Dell.com/CloudClientWorkspace](https://Dell.com/CloudClientWorkspace).

# Why Wyse Management Suite

## Built to fit your environment

### One tool does it all.

Wyse Management Suite is a flexible hybrid cloud solution that allows to centrally configure, monitor, manage and optimize Dell clients powered by Dell Hybrid Client and thin clients, anytime, anywhere. Wyse Management Suite is ideal for businesses small, large and in-between. With multiple versions, our solution meets all levels of deployment.

### Intelligent unified management

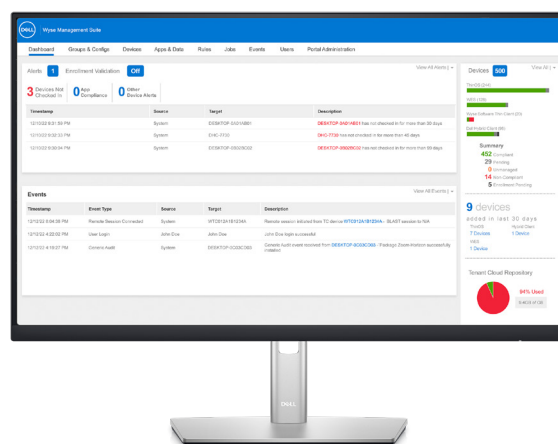
With hybrid cloud deployment and floating license allocation, manage your Dell devices from on-premises (data center), hybrid or public cloud for greater control and agility. The cloud-first, multi-tenant model supports your growing business requirements.

### User friendly, right from the start

The management console is localized in 7 different languages making it convenient for our international teams to deploy it in regional languages.

### Keep everything running

Future proof your business with support for high availability. Work confidently with Azure Active Directory authentication for role-based administration, advanced security through two-factor authentication, HTTPS-based imaging and compliance policy alerts.



### Stay ahead of issues

Wyse Management Suite Pro comes with Dell ProSupport<sup>3</sup> for Software - ProSupport for Software offers 24x7 access to in-region advanced technology experts who take action to resolve critical issues when they arise, so you can focus on the strategic work that moves your business ahead.

### From zero to productivity instantly

with Wyse Management Suite Pro on public cloud.<sup>2</sup> Manage from any browser and view critical alerts on the dashboard and send real time commands with one tap for real-time endpoint modern management of Dell select endpoints and software.

### Automated processes

and intelligent insights with powerful dynamic device-grouping and rules-based automation deliver a flexible and proactive management approach.

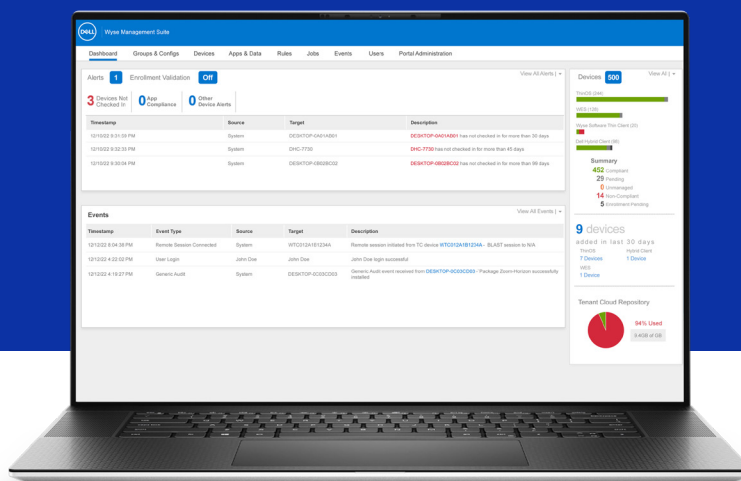
► [Click here to access the interactive demo](#)



# Wyse Management Suite Pro

**40+**  
Value add  
software  
features  
in Pro

Modern public and private cloud deployment and management



Cloud-first



Browser-based  
Access



Scalability &  
high availability



Automation  
& reporting



Enterprise-class  
administration

## Wyse Management Suite Standard version

**Free download.** Improve your productivity and enjoy streamlined deployment and maintenance with a free, on-premises management tool for small deployments.

[Download Now](#)

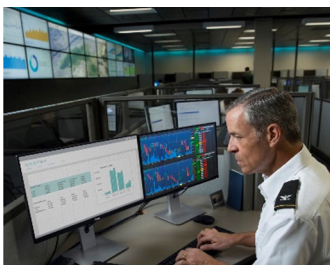
## Wyse Management Suite Pro version

Efficient hybrid cloud management solution. Per seat, per year subscription with the option of either on-premises deployment or public cloud – or a combination of both with floating license allocation between private and public clouds.

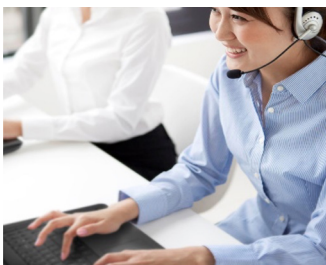
[Free trial](#)

# Wyse Management Suite

## Typical Use Cases for Wyse Management Suite



**Highly regulated organizations** with no access to external networks and high need of advanced features



Organizations with **high deployment needs** with multiple offices and **remote workers**



Organizations with **mixed environments** and combination of on site and remote workers

## Recommended Solution

Wyse Management Suite  
**Pro with Private Cloud**

Wyse Management Suite  
**Pro with Public Cloud**

Wyse Management Suite  
**Pro with Public and Private Cloud**

# Your thin client solution in 3 easy steps

Meet the evolving needs of the workforce and increase efficiency without compromising on security with Cloud Client Workspace software and Dell thin client solutions. Pair our thin client software options with industry-leading Latitude and OptiPlex systems for a personalized VDI endpoint solution delivering smarter user experiences and stronger security.

## 1 Select the Thin Client Software

### Dell ThinOS<sup>1</sup>

The most secure thin client OS\* is purpose-built for VDI to deliver a simplified end-user and IT experience.

### Dell Hybrid Client<sup>1</sup>

Modern thin client software with incredible flexibility allowing secure access to applications and data, wherever they live – whether that's in the data center, the cloud or the local device.

### Windows 10 IoT Enterprise<sup>1</sup>

Power and familiarity of Windows® in a thin client optimized by Dell with robust security features and flexible management options.

## 2 Choose a Form Factor

Laptop, All-in-One and desktop form factor options give you the freedom to create a personalized virtual workspace. Work in confidence anywhere and enable a more productive and collaborative VDI experience with our new premium devices.



### OptiPlex 3000 Thin Client

The OptiPlex 3000 Thin Client delivers a quiet, durable computing experience and makes it easier to multi-task.



### OptiPlex All-in-One

Work in comfort and style with a sleek, new All-in-One design with collaboration and security features built in.



### OptiPlex Micro<sup>1</sup>

Ultra-compact desktop designed to free up workspaces. Supports up to 4 displays.



### Latitude 3440

Tackle tasks with this modern laptop equipped with upgraded features.



### Latitude 5440

Achieve the perfect balance with this scalable laptop that boast impressive power.

## 3 Add Wyse Management Suite Pro

An enterprise-class solution that provides modern and secure management of all your Dell thin client solutions from anywhere. Securely manage a distributed workforce with a hybrid cloud solution designed to meet all deployment levels.

[Click here to learn more about Cloud Client Workspace.](#)

\* Based on Dell analysis of Dell ThinOS v. competitive products, January 2023. January 2023. CLM-006983

<sup>1</sup> Offering may vary by country and by configuration and operating system. Some items may be available after product introduction. For complete details, refer to the Setup and Specifications published on [www.dell.com/support](http://www.dell.com/support). Dell Hybrid Client (v2.0 or above) is a customer install options sold separately and requires the device to be configured with 8 GB Memory, 128 GB or higher capacity SSD/HDD and Ubuntu Linux 22.04 with Dell Client Agent Enabler (DCA-Enabler). Dell ThinOS is not available to configure with the OptiPlex Micro.

Feature	Wyse Management Suite Standard version	Wyse Management Suite Pro version (Private)	Wyse Management Suite Pro version (Public)
Highly scalable solution	Small deployments, single location	Large deployments, multiple locations, up to 120K endpoints	Large deployments, multiple locations, up to 1M endpoints
License term	Free download	Per seat subscription	Per seat subscription
License Key	Yes <sup>1</sup>	Yes	Yes
Architecture	On-premises	On-premises	Public cloud
Flexible deployment / hybrid cloud with floating license allocation		•	•
Advanced installer		•	
Multi tenancy		•	•
Companion mobile app (available on Android and iOS devices)		•	•
Delegated Administration for permissions granularity		•	•
Multiple repositories to support your distributed architecture		•	•
Option to configure WMS server alias		•	•
API support for integration with IT tools		• Reference architecture	•
Proxy Support (Socks5)	•	•	•
High Availability		•	•
Dell ProSupport for Software included <sup>3</sup>		•	•
Dell Endpoints			
Dell client devices configured with Dell Hybrid Client		•	•
Dell thin clients with ThinOS (factory install)	•	•	•
Dell thin client solutions with ThinOS (customer install)		•	•
Dell thin clients with Windows 10 IoT Enterprise	•	•	•
Software thin clients (converted Windows PCs)		•	•
<b>Reporting &amp; Monitoring</b>			
Localized management console		•	•
Alerts, Events and Audit logs via email and mobile app		•	•
Enterprise Grade Reporting		•	•

\* subject to on-line registration [Click Here](#)

Feature	Wyse Management Suite Standard version	Wyse Management Suite Pro version (Private Cloud)	Wyse Management Suite Pro version (Public Cloud)
<b>Dell Thin Client Solutions management features</b>			
<b>Complete Asset Visibility</b>			
Automatic device discovery	●	●	●
Asset, Inventory & systems management	●	●	●
View effective configuration at device level after inheritance	●	●	●
<b>Reporting &amp; Monitoring</b>			
Remote shadow	● via VNC	● via VNC	● *
Configurable heartbeat and check-in interval	●	●	●
Basic Telemetry Data for ThinOS Devices		●	●
<b>Security</b>			
Secure communication (HTTPS)	●	●	●
Communications over secure MQTT	●	●	●
802.1x certificate deployment	●	●	●
Two-factor authentication		●	●
Active directory authentication for role-based administration		●	●
Active Directory (AD) mapping using LDAPs		●	●
Azure Active Directory		●	●
Single-SignOn (SSO) with Ping Federate			●
Domain join feature Windows-based thin client solutions		●	●
Lockdown settings (enable/disable ports of supported endpoints)		●	●
<b>Comprehensive Management</b>			
OS Patch and Image management	●	●	●
Smart Scheduling	●	●	●
Silent deployment	●	●	●
Wave deployment for Dell ThinOS devices		●	●
Bundle applications to simplify deployment and minimize reboots		●	●
Dynamic group creation and assignment based on device attributes		●	●
Repository assignment to application policy		●	●

\* Peer-to-Peer remote shadow is available for thin clients with Dell ThinOS from Wyse Management Suite public cloud and requires ThinOS 2311 and Wyse Management Suite version 4.2 or above



Feature	Wyse Management Suite Standard version	Wyse Management Suite Pro version (Private Cloud)	Wyse Management Suite Pro version (Public Cloud)
Advanced application management and application policy		•	•
Convert Dell clients with Ubuntu 20.04 and DCA Enabler to ThinOS 2205 or above <sup>10</sup> . select models only		•	•
Convert and repurpose Windows PCs into fully controlled endpoints		•	•
<b>Configuration</b>			
Wizard configuration (Dell ThinOS 8.x, 9.x and Windows 10 IoT Enterprise LTSC 2021)	•	•	•
Wizard configuration (Dell Hybrid Client)		•	•
Multi Monitor Support	•	•	•
Dell Easy Setup & Overlay Optimizer (Windows 10 IoT Enterprise)	•	•	•
Bulk Device exception	•	•	•
Cloud providers and client local browsers configuration (Dell Hybrid Client)		•	•
Follow-me Profile and User Personalization Data Roaming (Dell Hybrid Client)		•	•
File affiliation to prioritize application delivery mode (Dell Hybrid Client)		•	•
Scripting Support for customizing application installation		•	•
BIOS settings & configuration support		•	•
Export/import policy configurations		•	•
RSP package support		•	•

FEATURE	TECHNICAL SPECIFICATION
MODEL NUMBER	Wyse Management Suite 4.3
EDITIONS	Wyse Management Suite Standard: private cloud Wyse Management Suite Pro: private cloud, public cloud or hybrid mode
SYSTEM REQUIREMENTS (WMS SERVER FOR ON-PREMISES DEPLOYMENT)	<p>The software can be installed on a physical or virtual machine</p> <p>Wyse Management Suite Standard:</p> <ul style="list-style-type: none"> <li>Supported Operating System – Windows Server 2016, and Windows Server 2019 Standard and Windows Server 2022</li> <li>Supported language pack—English, French, Italian, German, Spanish, Japanese, and Chinese.</li> <li>Minimum Disk Space – 40GB</li> <li>Minimum Memory (RAM) – 8GB</li> <li>Minimum CPU requirements– 4 CPU</li> <li>MongoDB Enterprise 5.0.18 is required (included in the installer)</li> </ul> <p>Wyse Management Suite Pro (Private Cloud up to 50K endpoints):</p> <ul style="list-style-type: none"> <li>Supported Operating System – Windows Server 2016, and Windows Server 2019 Standard and Windows Server 2022</li> <li>Supported language pack—English, French, Italian, German, Spanish, Japanese, and Chinese.</li> <li>Minimum Disk Space –120GB</li> <li>Minimum Memory (RAM) – 16GB</li> <li>Minimum CPU requirements – 4 CPU</li> <li>MongoDB Enterprise 5.0.18 is required (included in the installer and required on all DB nodes)</li> </ul> <p>Simple and powerful private cloud installer to install all the required components to run Wyse Management Suite within 5 minutes.</p>
CLOUD-HOSTED REPOSITORY	10GB storage on Tenant Cloud repository for applications and components deployment (WMS Pro on public cloud only)
CERTIFICATIONS AND STANDARDS	System and Organization Controls (SOC) 2 Type 2 attestation report. To access the report, please contact your dedicated sales and service representative. <a href="#">Learn more</a>
SUPPORTED ENDPOINTS <sup>7</sup>	<ul style="list-style-type: none"> <li>OptiPlex, Latitude and Precision systems<sup>4</sup> configured with Dell ThinOS, Dell Hybrid Client<sup>5</sup> and Windows 10 IoT Enterprise</li> <li>Converted Windows PCs (formerly Wyse Converter for PCs) - supports Windows 10 Professional 21H1 / 21H2 (64-bit) and Windows 10 Enterprise 1H2 (64-bit)</li> </ul>
WYSE MANAGEMENT SUITE PRO EDITION (PUBLIC AND PRIVATE CLOUD) SUBSCRIPTION OPTIONS	<p>1-year subscription with maintenance and ProSupport for Software</p> <p>2-year subscription with maintenance and ProSupport for Software</p> <p>3-year subscription with maintenance and ProSupport for Software</p> <p>5-year subscription with maintenance and ProSupport for Software</p> <p>Note: Floating license allocation between public and private cloud</p>
SUPPORTED BROWSERS (MANAGEMENT CONSOLE)	<p>Google Chrome version 121.x and later versions</p> <p>Mozilla Firefox version 115.x and later versions</p> <p>Microsoft Edge browser on Windows 121.x and later (English only)</p>
SUPPORTED LANGUAGES (MANAGEMENT CONSOLE)	English, French, Italian, German, Spanish, Japanese, Chinese
COMPANION MOBILE APP	<p>Allows administrator to manage and monitor devices from anywhere in real-time.</p> <p>Available with Wyse Management Suite Pro (Public and Private cloud) for Android and iOS devices</p>
TRIAL SOFTWARE	Request a 45-day free trial at <a href="https://www.wysemanagementsuite.com/">https://www.wysemanagementsuite.com/</a>

1. Requires Wyse Management Suite Pro edition. Based on Dell internal analysis, September 2021. Dell legal AD# CLM-003072.

2. License activation required. Dell legal AD# G19000328

3. Dell ProSupport availability and terms vary by region. See [dell.com/servicecontracts/global](https://dell.com/servicecontracts/global).

4. Offering may vary by country and by configuration and operating system. Some items may be available after product introduction. For complete details, refer to the Setup and Specifications published on [www.dell.com/support](https://www.dell.com/support). Dell Hybrid Client (v2.0 or above) is a customer install options sold separately and requires the device to be configured with 8 GB Memory, 128 GB or higher capacity SSD/HDD and Ubuntu Linux 22.04 with Dell Client Agent Enabler (DCA-Enabler). Dell ThinOS is not available to configure with the OptiPlex Micro Form Factor.

5. Wyse Management Suite Pro is required

6. Refer to the Wyse Management Suite documentation available on [Dell.com/support](https://www.dell.com/support) for a more detailed list of supported Dell thin clients and recommended firmware builds.



# Built for business

Dell Technologies Software Solutions Flexible. Simple. Secure.



## Deploy

Deploy in about a minute<sup>7</sup> and autoconfigure in less than 10.<sup>8</sup> With simplified setup, configuration and management, Dell thin clients can be deployed right out-of-the box. Dell services portfolio for Dell thin clients helps you streamline deployment, so you can focus on innovation.



## Manage

With unified end-to-end deployment and management from Wyse Management Suite (WMS), you can manage from on-premises (data center), hybrid or public cloud and scale easily from one to hundreds of thousands of devices.



## Secure

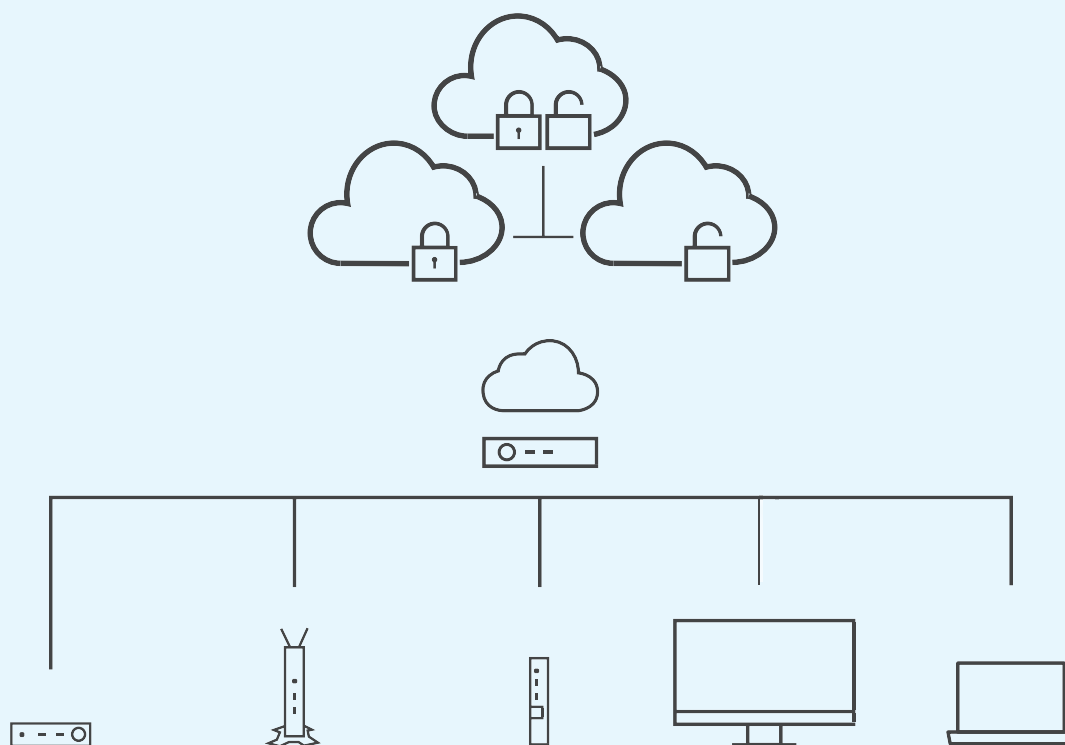
Get the most secure thin client operating system with Dell-exclusive ThinOS.<sup>9</sup> Select Windows 10 IoT Enterprise with Dell added security features to access confidently virtual workspaces or choose Dell Hybrid Client, purpose-built to augment the security of your VDI and cloud environments.



## Support

Let us make hardware and software support easy. ProSupport offers 24x7 access to in-region advanced technology experts who contact you when critical issues arise, so you can focus on the strategic work that moves your business ahead.

# Configure, monitor and manage with ease.



## Learn more at [Dell.com/CloudClientWorkspace](https://Dell.com/CloudClientWorkspace)

1. Requires Wyse Management Suite Pro edition. Based on Dell internal analysis of competitive products, September 2021. Dell legal AD# CLM-003072.
2. License activation required. Dell legal AD# G19000328.
3. Dell ProSupport availability and terms vary by region. See [dell.com/servicecontracts/global](https://dell.com/servicecontracts/global).
4. Offering may vary by region. Some items may be available after product introduction. For complete details, refer to the technical documentation published on [www.dell.com/support](https://www.dell.com/support).
5. Wyse Management Suite Pro is required. Wyse Management Suite supports Dell select endpoints powered by Dell Hybrid Client, Dell thin clients and converted Windows PCs.
6. Refer to the Wyse Management Suite documentation available on [Dell.com/support](https://Dell.com/support) for a more detailed list of supported Dell thin clients and recommended firmware builds.
7. Based on Dell analysis, January 2024, measuring the automated deployment using Wyse Management Suite of the OptiPlex 3000 Thin Client with factory-installed Dell ThinOS. Actual results will vary depending on system, network and IT environment configuration.. CLM-003540
8. Based on Dell analysis, January 2024, measuring the automated configuration using Wyse Management Suite of the OptiPlex 3000 Thin Client with factory-installed Dell ThinOS. Actual results will vary depending on system, network and IT environment configuration. CLM-003541
9. Based on Dell analysis of Dell ThinOS v. competitive products, January 2024. Dell legal AD#G19000130.
10. Not all features and services are available in all countries or sales segments/customers. Contact your Dell Technologies Services Representative for availability.