

# DELL EMC SMARTFABRIC DIRECTOR

The evolution of networks has seen a shift from legacy, proprietary technologies that are hardware-bound to modern, open technologies that are software-driven and driving innovation. As seen with the rapid adoption of server virtualization throughout data centers, today's organizations are embracing the concepts of a software-defined network based on virtualization concepts that bring enhanced efficiency, agility and security. The challenge that remains is how to ensure the physical underlay network is provisioned and optimized for these virtual environments.

The Dell EMC SmartFabric Director enables data center operators to build, operate and monitor an open network underlay fabric based on Dell Open Networking PowerSwitch Series switches. SmartFabric Director automates and simplifies the provisioning and monitoring of the fabric using Openconfig based models and protocols. Tight integration with VMware vSphere and NSX-T allows SmartFabric Director to dramatically simplify fabric provisioning for dynamic virtualized workloads and overlays.

## SmartFabric Director provides the following key features and functions:

### Leaf-Spine Fabric Automation

SmartFabric Director uses a declarative model that allows the user to express intent with a set of well-defined fabric types. User input to SmartFabric Director is in the form of a JSON formatted file that includes wiring diagram information.

The three pre-defined fabric types include:

- A layer 2 leaf-spine fabric
- A layer 3 Border gateway protocol (BGP) leaf-spine fabric
- A layer 3 BGP leaf-spine fabric with NSX-T overlay

Network topologies with edge/border leaves with BGP as the peering protocol are also supported.

Fabric discovery is an ongoing process and ensures that the fabric wiring is consistent with the user-defined intent. The quick error-free deployment of the SmartFabric OS10 configuration on the PowerSwitches takes away the guesswork and enables rapid auto-provisioning of fabrics. Complex Day N operations such as add/remove switch, links, etc. are easily handled with a few clicks. SmartFabric Director allows the user to import multiple fabric wiring diagrams to manage changing requirements.

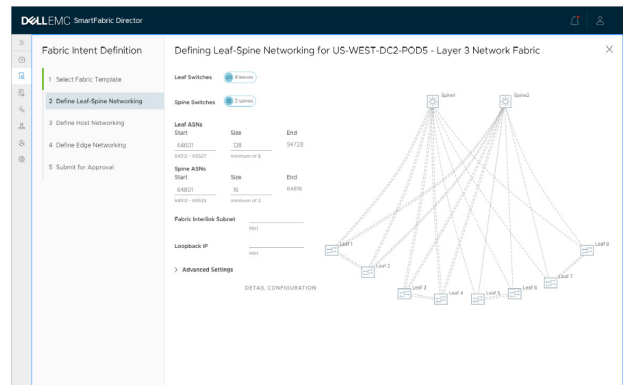


Fig 1. Declare user intent with minimal user input

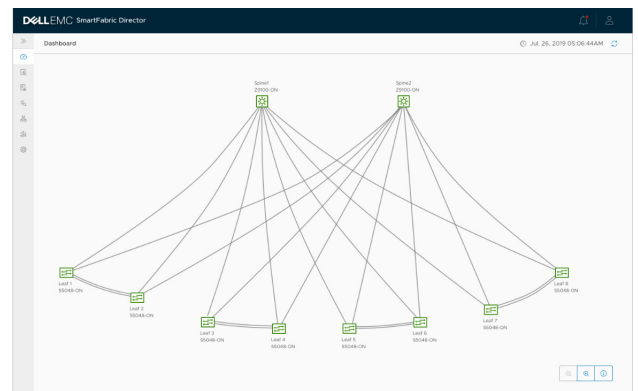


Fig 2. Fabric fully provisioned

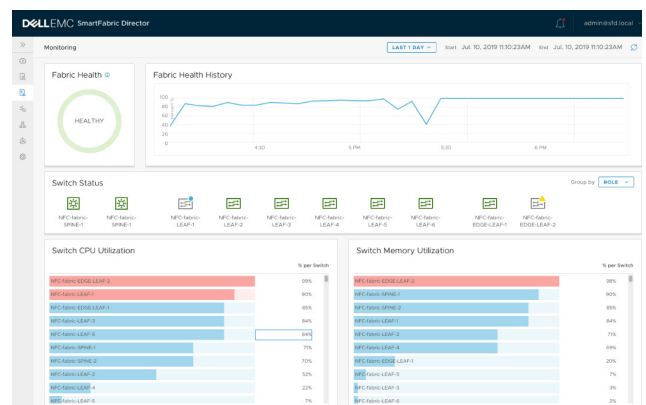


Fig 3. Overall fabric health visibility

## VMware vSphere® and NSX-T Data Center™ integration

Tight integration of SmartFabric Director with VMware vCenter and NSX-T ensures that the physical underlay/fabric is correctly provisioned to help ensure seamless functioning of the application workloads in a VMware Software-defined data center. This includes provisioning virtual LANs (vLans), auto-creation of Link aggregation (LAGs)/port-channels, auto-detecting add/remove of ESXi hosts and Maximum transmission unit (MTU) consistency checks.

### Fabric lifecycle management

Upgrading switch images is a critical operation in a data center. SmartFabric Director automates this download, install and verify process and ensures that the fabric switches are upgraded with the right images. User defined 'switch group' tags offer a highly flexible way to selectively upgrade specific switches that share common attributes.

### Fabric visibility

SmartFabric Director supports highly scalable and flexible openconfig-based streaming telemetry to gather key operational data and statistics from the fabric switches. SmartFabric Director collects telemetry data from the switches and provides out-of-the-box insights such as switch health and fabric health that can ensure consistency between the operational state and the intended state. Comprehensive and highly intuitive visualization of the time-series data and other telemetry information greatly simplifies the day-to-day operations of the fabric. A switch profile screen includes key operational data that gives the operator a quick and easy way to monitor switch state.

## Base infrastructure / Enterprise integration

In order to enable easy deployment and integration in Enterprise data centers, SmartFabric Director supports a host of features. They include:

- Active Directory integration for easy user management
- Periodic/on-demand backups to external File transfer protocol (FTP) server for easy recovery from catastrophic failures
- Serviceability: comprehensive logging, error handling and alerting and notifications

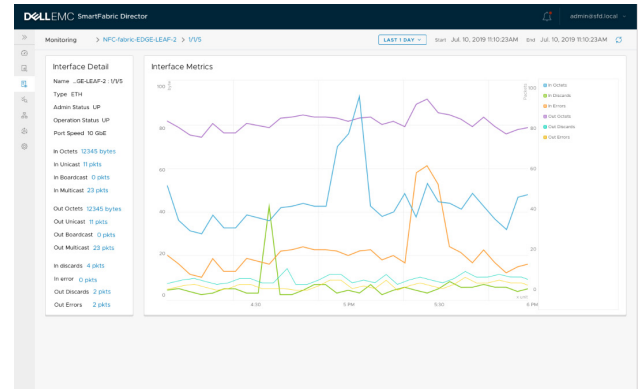


Fig 4. Time-series representation of individual metrics

## SmartFabric Director features and capabilities

Feature	Description
Intent-based auto- provisioning	Topology discovery and validation. Auto-provisioning of data center fabrics based on user intent.
Comprehensive topology support	- L2 leaf-spine fabric, L3 BGP leaf-spine fabric with NSX-T overlay. - Edge/border leaf support with BGP as peering protocol
SmartFabric OS10 feature support	LLDP, VLAN, RSTP, VLT, LAG, LACP, VRRP, BGP, BFD, UFD
Virtualized infrastructure aware	Integration with VMware vSphere (6.5 and higher versions) to auto learn virtual networks and provision fabric accordingly; auto-detect ESXi hosts and LAGs
NSX-T integration	Integration with VMware NSX-T (2.3 and higher versions) to auto-provision the fabric/underlay correctly for the NSX-T overlay; support for transport VLAN and MTU check
Switch life cycle management	On-demand and scheduled switch OS upgrade; user defined tag-based grouping for selective and phased upgrades; support for multiple (FTP/SFTP/TFTP/HTTP/SCP) image transfer protocols
Fabric visibility	Streaming telemetry from fabric switches for real-time visibility into fabric operational state
User management	Local users and Active Directory support for easy integration
Backup/Restore	Periodic FTP backups of configuration and logging data to ensure easy system recovery in the event of a failure
Application programming interface (API)	JSON-based northbound API to enable automation workflows and integrations
System access/management	Graphical user interface (GUI), API, CLI

## System requirements

<b>Hardware</b>	Virtualization ready x86 server
<b>Hypervisor</b>	VMware ESXi 6.5 and higher
<b>Form factor</b>	Virtual appliance (OVA)
<b>SmartFabric Director VM specifications</b>	The minimum requirements are: <b>CPU:</b> 4vCPU <b>Memory:</b> 16GB <b>Disk:</b> 100GB*

\*Larger disk size might be required to support telemetry and log collection in larger size fabrics with higher data retention requirements. Please check the user guide for sizing information and best practices.

## SmartFabric OS10 supported

SmartFabric Director Version	OS10 Releases Supported
1.1.1	10.5.0.5 10.5.0.4
1.1.0	10.5.0.4
1.2.0	10.5.1.2

## PowerSwitch switches supported

SmartFabric Director Version	Switches supported
1.1.0 , 1.1.1	S4048-ON S4048T-ON S4112F-ON, S4112T-ON S4128F-ON, S4128T-ON S4148F-ON, S4148FE-ON, S4148T-ON S4248FB-ON, S4248FBL-ON S5212F-ON S5224F-ON S5232F-ON S5248F-ON S5296F-ON S6010-ON Z9100-ON Z9264F-ON

## Ordering information

SKU	Description
634-BTHY	SmartFabric Director, 8 switches, Perpetual
634-BTHW	SmartFabric Director, 32 switches, Perpetual
634-BTHX	SmartFabric Director, 64 switches, Perpetual*

\*Available in Q3CY2020



**Dell  
Technologies  
Services**

Plan, deploy, manage and support your IT transformation with our top-rated services

### Consulting

Dell Technologies Consulting Services provides industry professionals with a wide range of tools and the experience you need to design and execute plans to transform your business.

### Deployment

Accelerate technology adoption with ProDeploy Enterprise Suite. Trust our experts to lead deployments through planning, configuration and complex integrations.

### Management

Regain control of operations with flexible IT management options. Our Residency Services help you adopt and optimize new technologies and our Managed Services allow you to outsource portions of your environment to us.

### Support

Increase productivity and reduce downtime with ProSupport Enterprise Suite. Expert support backed by proactive and predictive artificial intelligence tools.

### Education

Dell Technologies Education Services help you develop the IT skills required to lead and execute transformational strategies. Get certified today.

Learn more at  
[DellTechnologies.com/Services](https://DellTechnologies.com/Services)

Learn more at [Dell.com/SmartFabric-Director](https://Dell.com/SmartFabric-Director)