

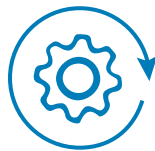


ENHANCED PERFORMANCE, RELIABILITY AND FLEXIBILITY

# Wyse thin clients with Windows 10 IoT Enterprise



**SMARTER, FASTER  
END-USER EXPERIENCES**



**INTELLIGENT, UNIFIED  
MANAGEMENT**



**SECURE, TRUE  
THIN CLIENT EXPERIENCE**

Experience optimized performance with Wyse thin clients and software designed to enhance your digital workspaces with ultimate security and intelligent unified management. The new generation of Wyse thin clients powers your organization with a more efficient and effective digital experience.

Learn More at [Dell.com/Wyse](https://Dell.com/Wyse)

# Why Windows 10 IoT Enterprise

POWER AND FLEXIBILITY OF WINDOWS® IN A THIN CLIENT

Combining Dell's optimizations in management and user experience with a rich Windows ecosystem, Windows 10 IoT Enterprise delivers immersive productivity for digital workspaces and address the needs of regulated industries such as healthcare, retail, government, financial services or education.



## SMARTER, FASTER END-USER EXPERIENCES

To support your cloud strategy and drive business transformation, Wyse thin clients running Windows 10 IoT Enterprise deliver the versatility and flexibility to access all types of virtual workspaces, cloud environments and a broad-range of eligible local Windows applications and peripherals. Experience a shorter time to productivity with Wyse Quick Start and Wyse Easy Setup for a customized and controlled desktop environment.

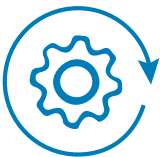
Windows 10 IoT Enterprise broadens the unified communications by supporting VDI plugins locally on the thin clients enabling high-quality media streams and delivering immediate benefits to the business with real-time communication and improved collaboration.



## SECURE, TRUE THIN CLIENT EXPERIENCE

Experience enhanced protection against modern security threats, less disruption in your workday and less time managing remediation of devices with Wyse added-value software providing enhanced write filter protection and granular control with lockdown features.

Support for single sign-on, multi-factor authentication and security compliance standards such as FIPS 140-2, IPv6, NIST BIOS, and TPM help to provide all your users with a consistent and secure desktop experience.



## INTELLIGENT, UNIFIED MANAGEMENT

Dell offers a full suite of on-premises and cloud management options to deliver robust, enterprise-level manageability. Wyse Management Suite lets you take control in five minutes or less and enables intelligent management from the cloud and/or the datacenter of all Wyse thin clients and converted desktops. To address the needs from small to large businesses, this efficient hybrid cloud management solution scales from one to hundreds of thousands of devices.

Alternatively, experience unified endpoint management (UEM) with support from VMware Workspace ONE®2 providing the benefits of a unified digital workspace platform. In addition, Wyse thin clients with Windows 10 IoT Enterprise are easily managed using Microsoft System Center Configuration Manager to take advantage of existing investment.

# Why Windows 10 IoT Enterprise

## SECURE BY DESIGN

Wyse thin clients with Windows 10 IoT Enterprise optimized by Dell provide enhanced user experience, increased uptime and stronger security.

---

### WYSE QUICK START

---



Experience a shorter time to productivity with Wyse Quick Start. This easy to use wizard guides users through the initial setup of their Wyse thin client and enhances the user experience by showcasing key device features, selection of the broker connection, management options and guides users to the Wyse Easy Setup application.

---

### WYSE EASY SETUP

---

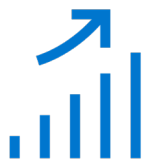


Simplify your thin clients configuration and deployment. Create a dedicated browser-focused client with the ability to configure multiple broker connections such as VMware, Citrix and Microsoft or configure a device with a dedicated application or settings for a particular line of business. Wyse Easy Setup helps to quickly and simply deploy configurations on Wyse thin clients with Windows 10 IoT Enterprise and create a controlled and specialized experience with kiosk mode for tightened security. Wyse Easy Setup can be managed locally for small deployments or leverage Wyse Management Suite for an unified end-to-end management from a single console that scales to hundreds of thousands of end points.

---

### WYSE OVERLAY OPTIMIZER

---

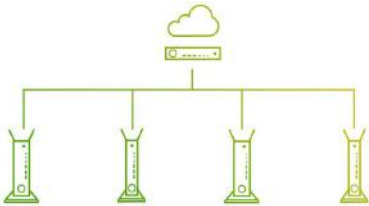


Experience confident productivity with Wyse Overlay Optimizer. This unique solution provides write protection and extends the uptime of Wyse thin clients. Wyse Overlay Optimizer is a patent pending software utility that provides better performance, session reliability and user experience by improving the performance of the Write Filter on Wyse thin clients with Windows 10 IoT Enterprise.

# Meet the Wyse Family

DELL SOFTWARE MAKES CONFIGURATION AND MANAGEMENT EASY

## WYSE MANAGEMENT SUITE



This efficient hybrid cloud management solution centrally configures, monitors and manages Wyse endpoints and scales from one to hundreds of thousands of devices to meet all levels of deployment. Optimized for an out-of-box experience with less than 5 minutes for installation, Wyse Management Suite is the only thin client management solution that comes with a mobile app, allowing IT users to view critical alerts and send real time commands\*.

## ADVANCED THREAT PREVENTION



With advanced threat prevention such as innovative anti-malware solutions, keep your users productive and prevent threats before they can execute.

Advanced Threat Protection (optional) provides data-centric encryption and revolutionary advanced threat prevention that proactively stops malware from even executing.

## WYSE CONVERTER FOR PCs



Extend the benefits of Wyse value-added software to all your users. Wyse Converter for PCs lets organizations convert and repurpose their Windows PCs into fully optimized endpoints to deliver a more secure and reliable digital experience. This hybrid solution offers the flexibility for IT to hide or expose local applications, helps minimize risks with Dell Write Filter, Wyse Easy Setup and OS customization and provides unified management of all converted PCs with Wyse Management Suite.

\* Based on Dell internal analysis, March 2019.

# Meet the Wyse Family

## WYSE THIN CLIENTS WITH WINDOWS 10 IOT ENTERPRISE

### WYSE 5070 THIN CLIENT



To meet the advanced business needs of collaborative knowledge worker, the Wyse 5070 delivers high-speed processing with the latest-gen Intel quad-core processors. The Wyse 5070 boosts user productivity with a high level of configurability. Features like True 4K graphics, multiple DisplayPort interfaces, USB-C, several network connection options, and integrated CAC/SmartCard reader option help ensure an extended, productive user experience day after day.



Take the experience to the extreme with Wyse 5070 Extended and the AMD Radeon E9173 option to enable up to six displays, four at 4K and two at 2K resolutions. Fashioned for power users utilizing 3D design applications on multiple 4K monitors, the 5070 features up to twenty-one ports and slots options for remarkable expandability.

### WYSE 5470 ALL-IN-ONE THIN CLIENT



Get lost in the project on the beautiful 23.8" FHD IPS display with support for a second display at 4K at 60Hz for even more productivity. Make space for the things that matter with a space-saving footprint and multiple stand options, so you can find the position that gets you to peak productivity with optimal comfort. Featuring DisplayPort, RJ-45, six USB ports and Bluetooth 5.0 option, you can benefit from a broad support of peripherals to empower a faster, smarter workflow and seamless collaboration with built-in support for unified communications.

### WYSE 5470 MOBILE THIN CLIENT



Connect, collaborate and work confidently on the move with the Wyse 5470 mobile thin client. A full HD 14" display, built-in support for unified communications and rich connectivity options deliver a productive user experience and faster and smarter collaboration. With inherent Wyse software security and ultra-manageability, the Wyse 5470 delivers a robust mobile cloud computing experience and keeps your data safe in the cloud while you transition confidently from your desk to meetings to remote work.



# Windows 10 IoT for Wyse thin clients

## TECHNICAL SPECIFICATIONS

Feature	Technical Specifications
<b>Supported Wyse thin clients<sup>1,3</sup></b>	Wyse 5070 thin client Wyse 5070 Extended thin client Wyse 5470 All-in-One thin client Wyse 5470 mobile thin client
<b>Server OS Infrastructure Support</b>	<ul style="list-style-type: none"><li>• VMware Horizon</li><li>• Microsoft® Windows Terminal Server</li><li>• Citrix Virtual Apps and Desktops (formerly XenDesktop/XenApp)</li></ul>
<b>Broker client<sup>1</sup></b>	<ul style="list-style-type: none"><li>• VMware Horizon client 5.x (with Blast Extreme and PCoIP)</li><li>• Microsoft RemoteFX (RDP10)</li><li>• Citrix Workspace App (coming soon)</li><li>• Citrix Receiver 4.12</li><li>• Citrix HDX RTME</li><li>• Ericom PowerTerm Terminal Emulation</li><li>• Ericom Connect WebConnect 7.5.1</li></ul>
<b>Local Browser</b>	<ul style="list-style-type: none"><li>• Microsoft Internet Explorer 11.x</li></ul>
<b>Included Software</b>	<ul style="list-style-type: none"><li>• Windows Media Player</li><li>• Microsoft Lync VDI 2013 plugin</li><li>• Windows Multi touch and gestures support</li><li>• Microsoft Silverlight</li></ul>
<b>Security<sup>4</sup></b>	<ul style="list-style-type: none"><li>• BitLocker Drive Encryption</li><li>• Windows Firewall enabled by default</li><li>• TPM Hardware encryption supported (factory configuration)</li><li>• UEFI specifications supported</li><li>• Auto-run of (local) USB devices disabled by default</li><li>• Unified Write Filter supported</li><li>• Anti-malware / Windows Defender</li><li>• Password encryption</li><li>• Advanced Threat Prevention element of the Dell Endpoint Security Suite Enterprise, version 10.1 from Cylance (optional)</li></ul>
<b>Wyse Quick Start supported languages</b>	English, German, French France, French Canada, Spanish, Japanese, Korean, Chinese Traditional, Chinese Simplified, Portuguese Brazil
<b>Wyse Overlay Optimizer supported languages</b>	English, German, French France, French Canada, Italian, Spanish, Japanese, Korean, Chinese Traditional, Chinese Simplified, Portuguese Brazil  NOTE: Installer text is displayed in English.
<b>Management Options</b>	Remote management, configuration, and upgrades through Wyse Management Suite Simple USB imaging solution with Wyse USB Firmware Tool Management through VMware Workspace ONE® (optional) <sup>2</sup> Support for Microsoft System Center Configuration Manager 2016
<b>Downloads and Technical Documentation</b>	Downloads and technical documentation are available on <a href="#">Dell eSupport</a> for the respective Wyse thin clients.
<b>Benefits</b>	Thin clients with Windows 10 IoT Enterprise are eligible for Microsoft Software Assurance (SA). For more information, refer to this guide: <a href="#">Microsoft Windows Virtual Client Licensing Explained</a>

1 - Offering may vary by region. Some items may be available after product introduction.

2 - VMware Workspace ONE can manage Wyse 5070 thin clients with Windows 10 IoT Enterprise 2019 LTSC.

3 - Wyse 5070 and Wyse 5070 are available with Windows 10 IoT Enterprise 2016 LTSC and Windows 10 IoT Enterprise 2019 LTSC. Wyse 5470 and Wyse 5470 AIO are available with Windows 10 IoT Enterprise 2016 LTSC.

4 - TPM is available in selected regions Extended.